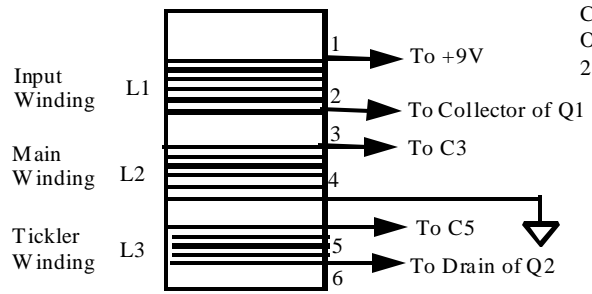


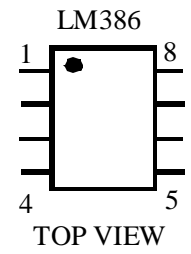
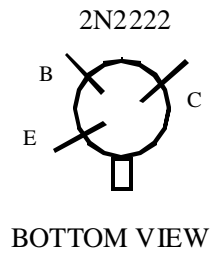
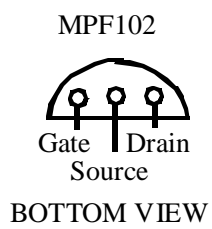
BAND A: 3.5MHz-6MHz  
 BAND B: 5.5MHz-11MHz

FINE TUNE



COIL FORM is 1.25 Inch  
 O.D. Plastic Pill Bottle  
 2 Inches or longer

L1 is 5T  
 L2 is 18T  
 L3 is 3 turns  
 All windings are close together  
 Wind all in same direction



Use #22 Hook-up Wire for Windings  
 Numbers on coil are connection points to the FAR Circuits PC board

# REGENERATIVE SHORTWAVE RECEIVER